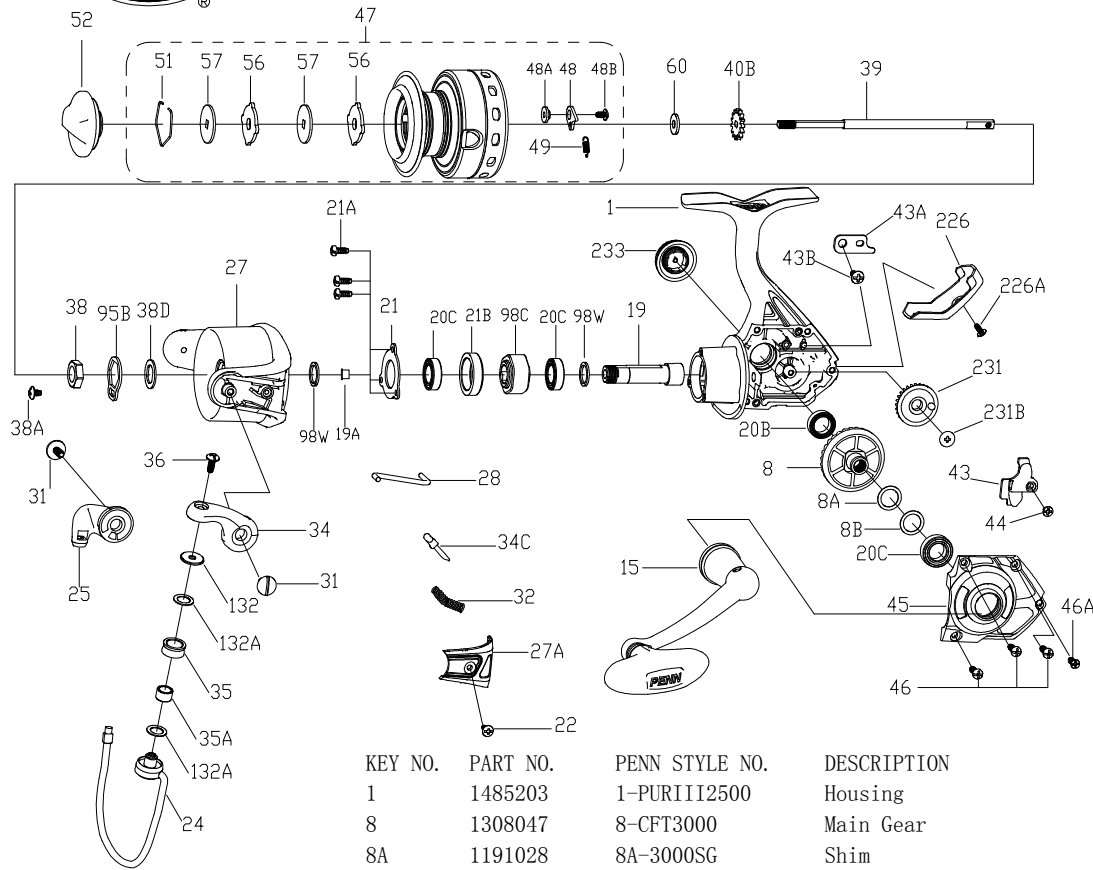




PARTS LIST FOR MODEL AS PURIII2500



KEY NO.	PART NO.	PENN STYLE NO.	DESCRIPTION
27	1485196	27-PURIII2500	Rotor
27A	1313812	27A-CFT2500	Bail Pivot Cover
28	1313813	28-CFT2500	Trip Lever
31	1313814	31-CFT2500	Bail Arm Screw (2 req)
32	1191583	32-2000SG	Bail Spring
34	1313815	34-CFT2500	Bail Arm
34C	1313816	34C-CFT2500	Pivot Arm
35	1313817	35-CFT2500	Line Roller
35A	1313818	35A-CFT2500	Line Roller Bushing
36	1251748	36-1000FRC	Bail Stud Screw
38	1191727	38-2000SG	Rotor Nut
38A	1203995	38A-3000PUR	Rotor Locking Plate Screw
38D	1308070	38D-CFT3000	Rotor Nut Washer
39	1313819	39-CFT2500	Main Shaft
40B	1191778	40B-2000SG	Click Ratchet
43	1485208	43-PURIII2500	Crosswind Block
43A	1191818	43A-3000SG	Crosswind Block Plate
43B	1203997	43B-3000PUR	Screw
44	1191843	44-3000SG	Crosswind Block Screw
45	1485200	45-PURIII2500	Housing Cover
46	1485201	46-PURIII3000	Housing Cover Screw (3 req)
46A	1485202	46A-PURIII3000	Housing Cover Screw
47	1485195	47-PURIII2500	Spool Assembly
48	1211604	48-3000SG	Click Tongue
48A	1214226	48A-3000SG	Click Tongue Washer
48B	1214189	48B-3000SG	Spool Click Screw
49	1211605	49-3000SG	Click Tongue Spring
51	1313823	51-CFT2500	Drag Retaining Ring
52	1485193	52-PURIII2500	Drag Knob Assembly
56	1485194	56-PURIII2500	Drag Washer (2 req)
57	1192041	57-2000SG	Keyed Washer (2 req)
60	1192059	60-2000SG	Thrust Washer
95B	1308081	95B-CFT3000	Rotor Locking Plate
98C	1192212	98C-3000SG	Clutch/Sleeve Assembly
98W	1204004	98W-3000PUR	Clutch Washer(2 req)
132	1313826	132-CFT2500	Roller Washer
132A	1192301	132A-2000SG	Line Roller Washer (2 req)
21A	1204016	21A-5000PUR	Bearing Retainer Screw(3 req)
21B	1192646	21B-2000SG	Collar
22	1203978	22-3000PUR	Bail Pivot Cover Screw
24	1313809	24-CFT2500	Bail Wire
25	1313810	25-CFT2500	Bail Holder
1	1485203	1-PURIII2500	Housing
8	1308047	8-CFT3000	Main Gear
8A	1191028	8A-3000SG	Shim
8B	1485199	8B-PURIII3000	Shim B
15	1485209	15-PURIII2500	Handle Assembly
19	1495904	19-PURIII2500	Pinion Gear
19A	1364314	19A-BTLII2500	Pinion Bushing
20B	1203974	20B-3000PUR	Housing Ball Bearing
20C	1203975	20C-3000PUR	Ball Bearing (3 req)
21	1485197	21-PURIII2500	Bearing Retainer
21A	1204016	21A-5000PUR	Bearing Retainer Screw(3 req)
21B	1192646	21B-2000SG	Collar
22	1203978	22-3000PUR	Bail Pivot Cover Screw
24	1313809	24-CFT2500	Bail Wire
25	1313810	25-CFT2500	Bail Holder
8	1308047	8-CFT3000	Main Gear
8A	1191028	8A-3000SG	Shim
8B	1485199	8B-PURIII3000	Shim B
15	1485209	15-PURIII2500	Handle Assembly
19	1495904	19-PURIII2500	Pinion Gear
19A	1364314	19A-BTLII2500	Pinion Bushing
20B	1203974	20B-3000PUR	Housing Ball Bearing
20C	1203975	20C-3000PUR	Ball Bearing (3 req)
21	1485197	21-PURIII2500	Bearing Retainer
21A	1204016	21A-5000PUR	Bearing Retainer Screw(3 req)
21B	1192646	21B-2000SG	Collar
22	1203978	22-3000PUR	Bail Pivot Cover Screw
24	1313809	24-CFT2500	Bail Wire
25	1313810	25-CFT2500	Bail Holder
43	1485208	43-PURIII2500	Crosswind Block
43A	1191818	43A-3000SG	Crosswind Block Plate
43B	1203997	43B-3000PUR	Screw
44	1191843	44-3000SG	Crosswind Block Screw
45	1485200	45-PURIII2500	Housing Cover
46	1485201	46-PURIII3000	Housing Cover Screw (3 req)
46A	1485202	46A-PURIII3000	Housing Cover Screw
47	1485195	47-PURIII2500	Spool Assembly
48	1211604	48-3000SG	Click Tongue
48A	1214226	48A-3000SG	Click Tongue Washer
48B	1214189	48B-3000SG	Spool Click Screw
49	1211605	49-3000SG	Click Tongue Spring
51	1313823	51-CFT2500	Drag Retaining Ring
52	1485193	52-PURIII2500	Drag Knob Assembly
56	1485194	56-PURIII2500	Drag Washer (2 req)
57	1192041	57-2000SG	Keyed Washer (2 req)
60	1192059	60-2000SG	Thrust Washer
95B	1308081	95B-CFT3000	Rotor Locking Plate
98C	1192212	98C-3000SG	Clutch/Sleeve Assembly
98W	1204004	98W-3000PUR	Clutch Washer(2 req)
132	1313826	132-CFT2500	Roller Washer
132A	1192301	132A-2000SG	Line Roller Washer (2 req)
21A	1204016	21A-5000PUR	Bearing Retainer Screw(3 req)
21B	1192646	21B-2000SG	Collar
22	1203978	22-3000PUR	Bail Pivot Cover Screw
24	1313809	24-CFT2500	Bail Wire
25	1313810	25-CFT2500	Bail Holder
226	1485204	226-PURIII2500	Rear Cover
226A	1485205	226A-PURIII2500	Rear Cover Screw
231	1485206	231-PURIII2500	Crosswind Gear
231B	1485207	231B-PURIII2500	Screw Crosswind Gear
233	1485198	233-PURIII3000	Bearing Cover Assembly

407-PURIII2500 Rev. 1 11-4-18

1481291